

Product data sheet

E 1500 S



Spindle drive with high opening and closing speed

AREAS OF APPLICATION

- Heavy windows in the roof area
- Natural ventilation, smoke and heat extraction system, natural smoke and heat extraction device (SHEV)
- Use in the exhaust air system
- Installation on wooden, PVC or metal windows

PRODUCT FEATURES

- High pressure force and high speed
- Max. opening width of 1000 mm achieved in less than 60 seconds
- Robust and corrosion-resistant design with built-in end position damping
- Syncro drive sets are available for leaf widths over 1200 mm
- Aluminium housing for highest design demands
- Extensive brackets allow versatile installation on main or secondary closing edges
- Synchro set without external control device
- Tested as a natural smoke and heat exhaust ventilation device (SHEV) in accordance with EN 12101-2

TECHNICAL DATA

Productname	E 1500 S
Opening speed RWA	16 mm/s
Opening speed ventilation	16 mm/s
Closing speed (max.)	16 mm/s
Force of pressure (max.)	1500 N
Holding force (max.)	25000 N
Compressive force	1500 N
Tensile force	1500 N
Voltage at operation	24 V ± 25 %
Operating voltage	24 V DC
Power consumption	4 A
Power consumption	72 W
Residual ripple	20 %
Duty rating	30 %
Connector cable length	3 m
Special length of connector cable	5 m, 10 m
Min. core cross section	1 mm ²
Number of cores	3 cores
Service temperature	-5 - 75 °C
IP rating	IP54
protection rating	III
Synchronising function	Yes
Type of additional locking mechanism	Locking drive
Type of stroke shortening	Factory setting
End position cut-off extended	electronic
End position cut-off retracted	electronic
Overload cut-off	Yes
Complete opening within 60 s	yes, up to 1000 mm stroke

E 1500 S



SHEV tested	Yes
SHEV additional information	yes, up to 1000 mm stroke
Number synchronisation drive units	4
KNX ability	No
OUTWARD-opening roof window	Yes

VARIANTS / ORDER INFO

Designation	Description	Ident-No.	Colour	Stroke	Operating voltage
E 1500 S	Can be configured: Stroke, cable length, colour	162384	according to RAL		24 V DC
E 1500 S Syncro	Comprising two drives with integrated synchronous control unit	162385	EV1	500 mm	24 V DC
E 1500 S Syncro	Comprising two drives with integrated synchronous control unit	162387	EV1	1000 mm	24 V DC
E 1500 S Syncro special version	Can be configured: Stroke, cable length, colour, Syncro 2-4	162388	according to RAL		24 V DC
E 1500 S		162382	EV1	750 mm	24 V DC
E 1500 S Syncro	Comprising two drives with integrated synchronous control unit	162386	EV1	750 mm	24 V DC
E 1500 S		162381	EV1	500 mm	24 V DC
E 1500 S		162383	EV1	1000 mm	24 V DC

ACCESSORIES

ROOF WINDOW BRACKET E 3000 *

For installation of the E 1500 S and E 3000 spindle drives



Designation	Ident-No.	Colour
Roof window bracket E 3000	121292	according to RAL
Roof window bracket E 3000	121291	white RAL 9016
Roof window bracket E 3000	121280	silver-coloured

BRACKET MOUNT E 3000 NSK AP *

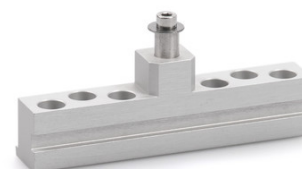
For roof window installation of the E 1500 S and E 3000 spindle drives



Designation	Description	Ident-No.	Colour
Bracket mount E 3000 NSK AP *	suitable for installation on the secondary closing edge of roof windows	140714	silver-coloured

LEAF BRACKET E 3000 NSK HE *

For roof window installation of the E 1500 S and E 3000 spindle drives



Designation	Description	Ident-No.	Colour
Leaf bracket E 3000 NSK HE *	suitable for installation on the secondary closing edge of roof windows (Heroal 85 D)	136206	EV1

CONICAL SLEEVE E 3000

For installation of the E 1500 S and E 3000 spindle drives



Designation	Description	Ident-No.	Colour
Conical sleeve E 3000	for installation of E 1500 S and E 3000	121275	white RAL 9016
Conical sleeve E 3000	for installation of E 1500 S and E 3000	121276	according to RAL
Conical sleeve E 3000	for installation of E 1500 S and E 3000	121274	silver-coloured

LEAF BRACKET E 1500/ E 3000 NSK AP *

For installation of the E 1500 N, E 1500 S, E 3000 and E 250 NT spindle drives

**LEAF BRACKET E 3000 ***

For installation of the E 1500 S and E 3000 spindle drives



Designation	Ident-No.	Colour
Leaf bracket E 3000 *	121277	silver-coloured
Leaf bracket E 3000 *	121279	according to RAL
Leaf bracket E 3000 *	121278	white RAL 9016

LEAF BRACKET E 3000 HSK HE *

For installation of the E 1500 S and E 3000 spindle drives



Designation	Description	Ident-No.	Colour
Leaf bracket E 3000 HSK HE *	suitable for installation on the main closing edge of roof windows (Heroal 085 D)	136207	EV1

LEAF BRACKET E 3000 NSK A-HU *

For installation of the E 1500 S and E 3000 spindle drives



Designation	Description	Ident-No.	Colour
Leaf bracket E 3000 NSK A-HU	suitable for installation on the secondary closing edge of roof windows (Alcoa AA 100, Hueck VF 50/60)	136205	EV1

LEAF BRACKET E 3000 NSK W-HU *

For installation of the E 1500 S and E 3000 spindle drives



Designation	Description	Ident-No.	Colour
Leaf bracket E 3000 NSK W-HU *	suitable for installation on the secondary closing edge of roof windows (Wicona WT 50/60, Hueck 85 E)	136204	EV1

BRACKET E 3000 NSK *

For roof window installation of the E 1500 S and E 3000 spindle drives



Designation	Description	Ident-No.	Colour
Bracket E 3000 NSK *	suitable for installation on the secondary closing edge of roof windows. Supplied by GEZE without conical sleeve ID no. 121274	130525	silver-coloured

BRACKET E 3000 NSK S *

For roof window installation of the E 1500 S and E 3000 spindle drives



Designation	Description	Ident-No.	Colour
Bracket E 3000 NSK S *	suitable for installation on the secondary closing edge of roof windows (Schüco AWS57 RO). Supplied by GEZE without conical sleeve ID no. 121274	136183	silver-coloured

E 1500 S**BRACKET MOUNT E 3000 HSK**

For roof window installation of the E 1500 S and E 3000 spindle drives



Designation	Description	Ident-No.	Colour
Bracket mount E 3000 HSK	suitable for installation on the main closing edge of roof windows	136202	silver-coloured

BRACKET MOUNT E 3000 NSK *

For roof window installation of the E 1500 S and E 3000 spindle drives



Designation	Description	Ident-No.	Colour
Bracket mount E 3000 NSK *	suitable for installation on the secondary closing edge of roof windows	136203	silver-coloured

POWER SUPPLY NT 6.25 A-24 V HS *

24 V power supply for top hat rail mounting



Designation	Description	Ident-No.	Colour	Dimensions	Operating voltage
Power supply NT 6.25 A-24 V HS *	Output voltage 24 V DC / W x H x D: 72 x 95 x 66.5 mm / Installation on top hat rail, 4 division units	192113	grey	72 x 95 x 66.5 mm	230 V DC +/- 10%

* The products designated above may vary in form, type, characteristics, function, or availability depending on the country. Please get in touch with your GEZE contact person if you have any questions.